



**Payton
Foundation**

Annual Report 2025

Transformative generosity.

Amplified impact.

Contents

Our story	03	Empowering vulnerable lives	07	Global impact, personal transformation	20
Chairman's report	04	Housing	12	Our Board and team	21
Our approach	05	Empowering vulnerable lives, changing ours	14	Pathways to partner	22
Impact	06	Immersion trips	18	Profit and Loss	23



Our story

At Payton Foundation we cultivate opportunities for you to connect with charities and leverage your wealth, time, knowledge, and resources to drive meaningful transformation; helping you live a life of impact and purpose.

Inspired by the legacy of Ruth Payton, whose life impacted those around her and beyond, we are committed to advocating for generosity. Partnership is at the heart. We go beyond managing funds; we form genuine relationships with our donors and charity partners. By seamlessly facilitating the flow of funds, knowledge, and resources to our partner charities, we enable meaningful change in the lives of donors and the communities we support.

Our vision is to empower vulnerable people to transform their communities. Our three key funding areas provide the framework for our theory of change.

Founded by the Payton family in 2011 by donating 20% of the shares in Payton Capital Ltd. The corpus created from the sale of these shares in July 2024 funds our administration and seed funding for our charity partners.



“The act of giving doesn’t just enrich the lives of others but also leads to greater personal life satisfaction.”

DAVID PAYTON



Health and nutrition

People experiencing poverty are often in survival mode. It’s important to make sure people have access to their basic needs: food and clean water, basic healthcare, support for mental health and access to support services.

Only then can people build hope and begin to take steps towards improving their situation



Housing and support

A home is more than just shelter. It is the foundation of safety, security, dignity and overall wellbeing.

That’s why we support housing initiatives that focus on community, not just bricks and mortar. We support initiatives that prioritise not only stable accommodation but also the wraparound support people need to thrive; creating pathways to independence, and strengthen community connection.



Education and empowerment

The best investment is in empowering people to help themselves.

“If you give a person a fish you feed him for a day, if you teach them to fish he will eat for a lifetime.”

That’s why we support: formal education, vocational training, informal training such as life skills, micro-finance loans, start-up grants and employment programs.

Chairman's report

As I look back on the year, I'm deeply grateful to God for all that's been achieved through the Payton Foundation. We're living in a time where fear feels constant - wars, global tension, financial and health uncertainty and fear of missing out. Yet in my experience, it's perfect love that casts out fear.

As we give, we open our hearts and allow the unconditional love of God to flow through us to those who are most vulnerable. That love brings real transformation - forgiveness, restored identity, and a renewed sense of hope and future. And as that love flows outward, it also washes over us, breaking the power of fear in our own lives and meeting our deepest longings. Giving doesn't just change others' lives; it changes ours too.

This year marked an important new chapter. Following the sale of our equity in Payton Capital, the Foundation now stands independently. This transition has given us the freedom to forge our own path and accelerate our mission with fresh focus.

We also opened our new Brighton office. It's become a hub for philanthropy, community, strategy, and inspiration. It's a place where vision turns into action and generosity comes to life.

One of my personal highlights of the year was visiting our charity partners alongside our donors. Through Donor Immersion trips to Africa, the Philippines, as well as the Northern Territory, we saw first-hand the impact of our partnerships. These trips were deeply meaningful for everyone involved and allowed us to respond quickly to immediate needs. Our partners told us how much it meant that we showed up in person.



Looking ahead, we remain committed to using our resources to create greater impact. We're actively exploring ways to help address Australia's housing crisis and when the right opportunities arise, we look forward to inviting our partners to invest in initiatives that deliver real social impact.

As we build on the foundation laid over the past 14 years, I'm excited for what's ahead. Thank you to every donor and partner who has walked with us this year. We invite you to continue partnering with us for purpose.

DAVID PAYTON

Director / Chairman



Our approach

Empowering vulnerable lives, changing ours.

Partnering in health, housing and education

Catalysing change through donor and charity partnerships

Partnership is at the heart of who we are. It's not a grant process or a transaction. It's real people, giving of themselves to change the lives of others.

What sets our charity partnerships apart is our commitment to providing ongoing financial and holistic support, enabling our partner organisations to flourish.

Amplified impact

Rather than reinventing the wheel, we identify grassroots organisations already creating change and equip them with the resources to expand their reach and deepen their impact.

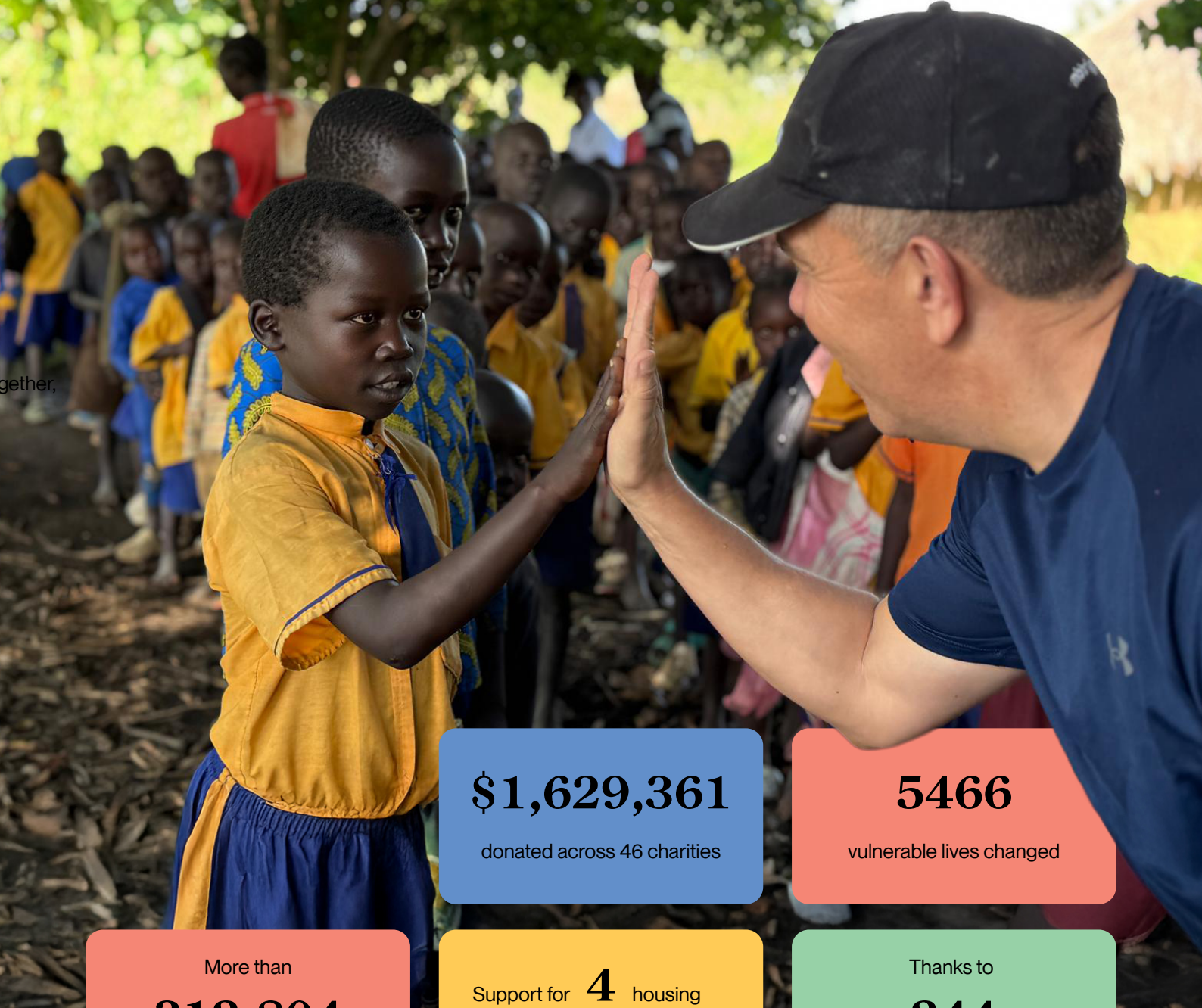
Our charity partners exemplify best practices in impact, leadership, and accountability. Through due diligence, consistent relationship and support, you can be sure that every donation fosters real-life transformations.

Transformative giving

We aspire to cultivate a culture of philanthropy by serving as a bridge between donors and charities, facilitating meaningful engagement.

As we reflect on the past year, we celebrate the lives transformed, both among those we serve and within our own community of givers. Together, we're sowing the seeds of a brighter tomorrow, one partnership at a time.

The highlights captured throughout this report are just a snapshot of the countless lives transformed by your generosity!



gether,

\$1,629,361

donated across 46 charities

5466

vulnerable lives changed

More than

312,804

meals and hampers shared

Support for **4** housing
and crisis accommodation
facilities in Australia

Thanks to

244

Giving Partners

Together, we are transforming hearts and transforming lives for:

Children

\$203,726

Emergency/ disaster relief

\$27,000

Health

\$66,739

First Nations communities

\$210,358

Girls and mothers

\$207,381

Vulnerable youth & families

\$328,497

People experiencing
homelessness

\$194,156

Refugees

\$38,000

Total giving over the past
eleven years has reached

\$6.8 million



Empowering vulnerable lives

We partner with best practice charities that demonstrate outstanding impact, leadership and accountability. Through careful due diligence, ongoing relationship and active support, you can trust every donation transforms lives.

Over the past year, we supported **46 charities** across Australia, Africa and Asia in the areas of **Health, Housing and Education**.

Levels of Partnership

Charity Partners

Our Charity Partners have undergone comprehensive due diligence and receive ongoing financial and relational support from the Payton Foundation. These partnerships involve direct collaboration, with the Foundation actively engaging in projects, providing ongoing seed funding and promotion to our network of Giving Partners. We participate in events, offer expertise, and provide opportunities for our Giving Partners to visit, volunteer, and connect with these charities. Together, we build long-term relationships that amplify the charity's impact and your contribution.





Payton endorsed charities

Payton endorsed charities have undergone a due diligence process to ensure alignment with our values, including commitment to community impact, sustainability, and integrity. Each organisation demonstrates the capacity to empower individuals and deliver meaningful outcomes. Support for these charities comes through our Giving Partners. Below are the charities we were proud to support this year:

Charity Partners

The Babes Project
Children's Ground
C.H.I.P.S
Evolve Community Hub
Fusion Mornington Peninsula
Kesho Bora
RUEL Foundation
Southern Peninsula Community Support
Te Kworo Foundation
ZOE Australia
ZOE Thailand

Payton endorsed charities

Australian Himalayan Foundation	Mums Support Families in Need
Back Track	Nairrm Marr Djambana
Believe	Prison Network
Captivating	Push For Better Foundation
Careline	Raise Foundation
Community Development Project	Show the Way
Disaster Aid	Southern Cross Kids Camp
Empower	Speak and Share
For Change Co.	St Johns
Gunya Meta	Street Peace
Habitat for Humanity	St Vincent De Paul
Hope School Mozambique	Ushirika
Local Kind	Watoto
Lord Mayors Charitable Foundation	Womens Community Shelter
Luz De Vida	We Are Mobilise
Melbourne Basket Brigade	Wilya Janta
Micah Projects	World Vision Australia
Mongolia Care	



Transformative generosity, amplified impact

Across Australia, Africa, and Asia, generosity is transforming lives and in turn, transforming us.

Each story represents what happens when compassion meets opportunity: barriers are broken, futures are rebuilt, and hope is restored.



Australia: Supporting Brian's family

When Brian* walked into the Southern Peninsula Community Support centre, he was holding it together for his children, but barely.

A single father caring for two young kids, they were homeless after fleeing family violence and losing his job due to declining mental health. No longer able to service debts and with young children to feed every day was a battle: protecting his children, managing past trauma, and holding on to hope.

Through the Family Support Team at SPCS, Brian and his children were supported and connected to the vital, wraparound support they needed: safe housing, mental health support, legal advocacy, education access and supports, and financial counselling.

In a complex crisis, it was your generosity that ensured Brian wasn't facing these challenges alone. Together, we helped him rebuild stability and hope.

* Name changed to protect anonymity. Individual not pictured.

“This family had been through a very rough few years and were at breaking point. Having services onsite and a collaboration representing both family and housing has achieved the best result possible for this family. They now have a safe roof over their heads and time to deal with the trauma of the past few years.”

TRACEY BYRNE, FAMILIES SUPPORT WORKER





Thanks to our support, she returned to school. Free from the financial burden that once held her back, she poured her energy into her studies and she thrived.

Africa: Rebecca's journey from hardship to hope

In 2019, Rebecca was a 16 year old girl living in Kibera, Nairobi's largest slum, and the eldest of five siblings. Rebecca was helping care for her family while her mother devoted most of her time to looking after Rebecca's younger sister, who lives with an intellectual disability.

Two years behind in her school fees, Rebecca's education was about to end. Not because she lacked ability, but because poverty left her with no choice.

Then she became one of the first recipients of our sibling education scholarships, now a cornerstone of Kesho Bora's work. The program supports siblings of children with intellectual disabilities; a targeted approach that ensures vulnerable families are given opportunities to build financial stability. It was the lifeline Rebecca needed.

Thanks to our support, she returned to school. Free from the financial burden that once held her back, she poured her energy into her studies and she thrived.

Her academic excellence earned her a place at Kenyatta University, where she is now in her final year of a Bachelor of Science in Nursing. Today, she's completing her clinical placement, gaining hands-on experience in hospitals and healthcare settings across Nairobi, while volunteering with the Kesho Bora to inspire the next generation.

Rebecca's story is more than a personal success, it's a testament to the life-changing impact of education. When we invest in a child, we're not only transforming a life, we're unlocking potential that uplifts families and communities for generations!



Asia: Grace's story

Behind every milestone we celebrate are lives being transformed. During our immersion trip to the Philippines, we met Grace, a bright young girl with a challenging story. Orphaned, partially deaf, orphaned, and struggling with outdated, oversized hearing aids, Grace faced immense barriers. Her speech difficulties made her a target for bullying, and she withdrew from school and community life.

When we shared Grace's story with our giving partners, they rallied alongside us. Together, we provided Grace with modern hearing aids, speech therapy and tutoring support. Grace now attends weekly speech therapy and receives three tutoring sessions a week with a licensed teacher.

Today, her confidence radiates. She engages joyfully in community and school life.

Grace's journey reminds us that simple acts of generosity can transform a future. Together, we're not just providing hearing aids or lessons—we're opening doors to connection, confidence, and hope.



“We are overjoyed to share that Grace has improved so much since she started using her hearing aids. She hears well, understands instructions, and has grown confident in joining her peers. Her progress in reading and pronunciation has been remarkable,”

GRACE'S SUPPORT WORKER



Housing

Transformative generosity in housing

A home is more than just shelter. It's a foundation for safety, security, and a sense of belonging. Housing anchors every other aspect of wellbeing. That's why we're committed to supporting housing initiatives that prioritise community and care, not just bricks and mortar.

Through trusted partnerships, we're investing in scalable housing solutions and helping to increase social housing stock that restore dignity, create pathways to independence and strengthen community connection.



Housing for vulnerable mums, Carrum Downs

When a young mother finds herself without a safe place to call home, every next step feels uncertain. Partnering with the Carrum Downs and Marriott Waters Community Bank, we've helped turn their vision into reality; creating safe, supported housing for mothers escaping domestic violence.

By providing the governance, structure and support needed, we've been able to help them make a profound difference in the lives of these women and their children.

Together with Mainline Developments, who sold the property at a significant discount, we've increased the local housing stock available and provided a secure haven where young mothers can rebuild their lives.

Already, 5 mothers and their children have found accommodation and support through this home. Each family is being supported on a pathway to stability, independence, and a brighter future.

This is about more than shelter. Our charity partner provides case management, mentoring, and tailored support for 6-18 months, helping each tenant build skills, confidence and lasting independence.

This collaborative model demonstrates what's possible when generosity, expertise, and compassion unite for long-term change.

From crisis to care: Expanding dignity, safety, and support on the peninsula

Over the past four years, Mornington Community Support Centre and Southern Peninsula Community Support have partnered to provide emergency accommodation through 'The Ranch' for people in crisis on the Mornington Peninsula.

Now, as housing stress continues to rise, we're scaling that impact.

In partnership with the Upotipotpon Foundation, we've purchased a new property, the Ranch 2.0. With seven dwellings and wraparound support, Ranch 2.0 is an urgent and necessary addition to the limited crisis accommodation available on the Peninsula.

Building on the original Ranch's success, achieving a 60% transition rate into stable housing, more than double the national average. Ranch 2.0 expands capacity and strengthens community collaboration.

"With demand increasing, this new site offers much needed stability for our most vulnerable" says Jeremy Maxwell, SPCS CEO. "The generosity shown by the Payton and Upotipotpon Foundations sets a new benchmark for impactful philanthropy," said Jeremy Maxwell, SPCS CEO.

This is about more than housing. It's about restoring dignity and strengthening responses to complex housing needs. It shows what's possible when funders and frontline organisations act with urgency and shared purpose.



Women's housing, MOE

In partnership with HIA's Victorian Homeless Fund (VHF) and Sherridan Homes, we're constructing a home on our site in Moe, for women and children made homeless by domestic violence.

The VHF model combines donated labour, building materials and philanthropic funds to construct family homes on land supplied by charitable organisations or Government. The VHF partners with community housing providers for 25 years, in this case the Women's Property Initiative (WPI), who ensure that families not only have shelter but also the security and on-going support needed to thrive.

This home is due for completion by the end of 2025.

Backing innovative housing models

We're proud to support forward-thinking housing models that push boundaries and respond creatively to complex need.

Through Wilya Janta and Women's Community Shelters, we're backing scalable approaches that integrate cultural understanding, community leadership, and trauma-informed care. Models that don't just build houses but rebuild lives.





Empowering vulnerable lives, changing ours

The act of giving doesn't just enrich the lives of others, it transforms us

Generosity awakens purpose, deepens empathy and reminds us of what truly matters. At Payton Foundation, we create opportunities for you to meaningfully engage in philanthropy; through hands-on experiences, strategic partnerships, and giving that creates lasting transformation.

We are immensely grateful for our 244 Giving Partners: individuals, families, small businesses and corporates. Each of you has offered your time, expertise and resources to empower vulnerable people to rebuild their lives. Together, we're building a movement of transformative generosity — one that changes communities and changes us.

Our promise to you remains the same, 100% of your donation goes to the approved charities we support.

“When individuals and communities unite through generosity, transformation multiplies.”

Watoto choir brings joy and hope to Southbank

We had the privilege of hosting the Watoto Children's Choir at Southbank. Their performance, filled with joy and hope, was a living testimony of transformation.

As the performance unfolded, the foyer grew fuller and fuller, people stopped in the middle of their workday, drawn by the music and stories. Laughter, tears, and quiet moments of reflection rippled through the crowd. Some reached out wanting to help, inspired to make a difference. Their day was transformed, and so too were those children.

When individuals and communities unite through generosity, transformation multiplies.

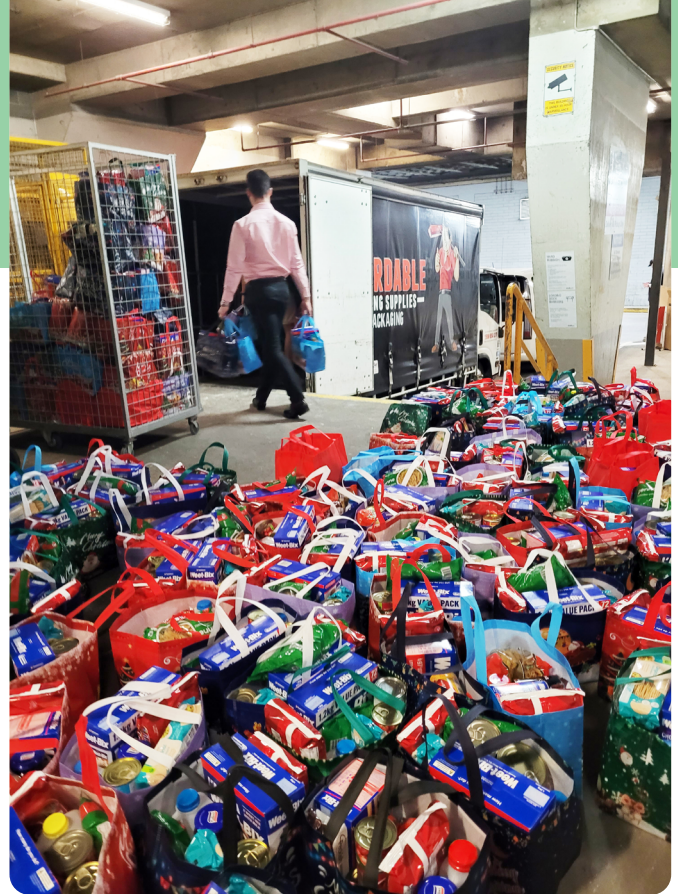


Packing hampers with purpose

At the Payton Foundation, one of our greatest privileges is helping businesses find connection and purpose through giving. This year, we partnered with K2LD Architects to support Prison Network - a charity walking alongside women in and beyond prison, offering support, connection, and hope during some of life's most difficult chapters.

“9 out of 10 women in Victoria’s prisons have been victims of violence or abuse. Many of trauma and disadvantage. The criminal justice system is incredibly difficult to escape, and most women come out more vulnerable than when they went in. Without support, 43% will return to prison.”

AMELIA, CEO OF PRISON NETWORK.



In a joint Packing Day event, teams came together to assemble care packs for women in custody— a small gift for International Women’s Day that delivered a powerful message: you are seen, you are valued, and you are not forgotten.

“The people in our office want to do more than work 9 to 5. They want to give back to community.”

DAVID, FOUNDER AND DIRECTOR OF K2LD.

Hearing from Kiki and Pattie, members of Prison Network’s lived experience panel, reminded us just how much these gestures mean. Kiki spoke about the challenges of staying connected with her child while in prison, where a 10-minute phone call used to cost \$12, and visiting hours often ended before school was out. Thanks to advocacy efforts, calls are now just \$3 a day, making it easier for mothers to maintain precious bonds with their children. Pattie shared how much it meant to receive a gift inside:

“When you receive nothing else, a small act of kindness means everything.”

These stories remind us why this work matters. And why we continue to help businesses find meaningful ways to engage with great charities. Because real change starts with connection and grows through shared purpose.

Backing the next generation of changemakers!

We want to help young people see the impact they can make and prepare them to lead with heart and purpose. We launched our pilot Next Generation Committee, a space for the next generation to connect, ask questions, explore ideas and develop their own philanthropic initiatives.

One inspiring example of what this support can achieve is Callum Munns, a young leader completing his final year of Medicine at Monash University. Callum and his team traveled to Rabaul, Papua New Guinea, delivering life-saving portable ultrasound equipment and training local health practitioners to use it. This initiative, born from passion, skill, and vision, represents exactly the kind of work we're committed to backing.

Callum's journey began in 2019 during a Payton Foundation Immersion trip to the Philippines, where he visited our charity partner RUEL. Witnessing firsthand the transformative power of accessible medical care lit a fire in him. Since then, he has been determined to combine his medical training with a heart to serve, especially in places where help is needed most.

The impact of the trip was immediate. On just one day, the team saw 230 patients. Among them were five pregnant women receiving their very first ultrasound scans. The new equipment allowed the team to provide vital care and even prevent unnecessary surgeries, demonstrating how a well-supported initiative can change lives on the spot.



This vision was shaped in collaboration with Dr. Peter Cheng and brought to life by the dedication of the entire team. We are proud to have helped supercharge their work and to play a part in enabling their impact.

When we invest in the next generation—giving them space to dream, ask questions, and take action—the results are inspiring. We are proud to see young people step up, take action, and transform lives, showing that the spirit of giving is alive and growing in the leaders of tomorrow.

ZOE justice walk

Trafficking and modern slavery aren't just problems overseas. These crimes are happening right here in Australia. With our support, we saw the launch of the ZOE Justice Walk Melbourne, bringing people together to take a stand and raise the crucial funding for a new care model supporting survivors of child trafficking in Australia.

We witnessed families, churches and businesses uniting with shared purpose: walking sided by side, deepening their understanding and turning compassion into action.

The Justice Walk created more than awareness; it opened space for people to engage with critical issues, to take meaningful action, and to feel deeply connected to a community committed to protecting children and restoring hope.





Partnering to launch a new wave of purpose-driven business

In March we joined the Wild Women in Business Awards Night; an evening filled with drive, resilience, and the bold spirit of women-led enterprise. We were proud to partner with them to launch a movement of purpose-driven businesses that believe success and social impact go hand-in-hand.

The event brought together 350 inspiring individuals to celebrate the stories and determination behind their business journeys. The energy in the room was electric. As guests created a vision board reflecting the social impact they hope to achieve through their work, it was clear: purpose is becoming central to business strategy.

Our own Stephanie Hill joined Lauren Wild on stage to share how philanthropy can be a transformative force; not only for the communities we support, but also for those who give. Her message challenged and inspired attendees to see philanthropy not as a side project, but as a strategic, values-aligned pillar of long-term success.

Luke's ultra marathon for Childrens Ground

Luke Moran joined us on our Children's Ground Immersion Trip. Inspired by what he saw, he took on the Marysville Ultra Marathon; a gruelling 50km run with 2000m of elevation, to raise vital funds for Children's Ground. With the support of K2LD and Payton Foundation, Luke was able to raise \$12,136, has learnt about the issues our First Nations friends face and continues to use his influence to advocate for this transformative work.

"Thank you for all your support and opportunities that you have provided. Its been an absolute pleasure to learn more about the fantastic work of Children's Ground and to help support in any way I can, along with getting to know you all."

LUKE MORAN





Immersion trips

Global impact, personal transformation

Visiting our charity partners provides a unique opportunity to deepen our understanding of the need and witness life-changing work firsthand. This year, alongside our local charity visits, we also arranged immersion trips; transformative experiences that reveal both the challenges and the joy of supporting communities around the world.

Kenya

Our journey in Kenya gave participants a window into the transformative impact of education and community support. For families facing the dual vulnerability of living in Africa's largest slum and caring for a child with a disability, our charity partners are a lifeline.

“It was mentally challenging. There were a lot of ups and downs. Turning up to the school, the smiles of the children. It’s a credit to the Foundation and the teachers. Kids can’t put that on. I got more out of it than the kids.”

ANDREW PARKE

Visiting homes of beneficiary families also revealed the complex challenges they face, from health and financial issues to housing struggles, and inspired ideas for practical, real-time solutions.

Philippines

Together we witnessed the vital work of our charity partner supporting vulnerable children. From visiting the Calapan Centre, a baby nourishment facility, to a hospital providing cleft palate surgeries. One unforgettable moment was delivering food parcels to the remote Mangyan tribe—reached by bullock cart across five rivers.

“Despite extreme poverty, the joy and warmth of the people was overwhelming.”

DAVID PAYTON

“When you’ve run a business for 30 years, you come across problems... Some problems can be solved, others are complex... We may not change the world, but we can change it for somebody.”

ANDREW PARKE





Papua New Guinea

In Rabaul, we supported a project providing portable ultrasound devices and training local health workers, enabling life-saving care and preventing unnecessary surgeries.

This initiative was led by Callum Munns, a passionate young leader whose vision, compassion, and drive embody the kind of change we're proud to support.

Thailand

In Thailand, we witnessed ZOE's remarkable work preventing, rescuing, and restoring children at risk of trafficking. Government officials have noted the health and wholeness of rescued children, highlighting the transformative impact of ZOE's restoration programs.

“Seeing ZOE’s work firsthand completely changed our perspective. Being there, meeting the children and the team, we could truly grasp the depth of the issues and feel the love and care that surrounds every child. You can’t really understand it without getting proximate.”

ALEX AND LINDA

Northern Territory

We had the privilege of going out on Country with Elders. We experienced Welcome to Country in diverse ways across the regions—one with smoke of burning native plants and another with water. We swam in a secluded waterfall and shared meals over a fire. The knowledge passed down through generations about the land's natural resources was awe-inspiring, and there was a palpable sense of peace being immersed in such untouched landscapes. These moments provided us with a rare opportunity to truly understand the importance of cultural preservation and the beauty of living in harmony with nature.

The resilience of these communities is evident. We saw First Nations people proud of their roles in community development, confidently driving positive change.

“This was a once in a lifetime experience, being welcomed into remote communities and swimming in waterholes few outsiders ever see. Beyond the unforgettable moments, the community development benefits were clear. The approach and employment of First Nations create a ripple effect, further benefitting the community and their families. The model is scalable, adaptable, and truly guided by the wisdom of First Nations leaders.”

JEREMY TOWNEND





Global impact, personal transformation

Our two week immersive experience in Kenya not only showcased the impact of education programs but also the power of community-led initiatives. From visiting schools and homes to witnessing the Kesha Bora (Better Tomorrow) Education in action, the group of 11 Australian donors were inspired by the remarkable work of our partners in Nairobi.

"It was an eye-opening experience... I couldn't believe how happy the children were. Without that school they wouldn't have anything. The school looks after them, the school gives them a purpose in life."

PETER BLAKE

During our journey, we were thrilled to visit the School Hall at Ushirika that we helped fund.

"We arrived to the tumultuous welcome of about 800 students predominately at-risk girls. We had spoken to the Principal at length about the School; how he had built it up over the years and how it had been funded. He was asked what was needed next and shared, 'if you ask the students themselves, they'd say they want a school bus.' As we were talking to students, it became very clear that a School bus was the dream. At the end of the assembly a couple on the trip were able to share with the students 'you've got their school bus.' There was an eruption! This tidal wave of joy... I've never seen anything like it!"

KERRY BLAKE

Our visit to Tatu City provided a glimpse into Kenya's future and highlighted the opportunities and challenges ahead. Your continued support will play a vital role in bridging the gap between education and employment, ensuring a better tomorrow for generations to come.

"The way my brain ticks, I kept thinking how can we help these families generate income themselves? Some problems can be solved, others are complex.... We may not be able to change the world, but we can change the world for somebody."

ANDREW PARKE

You support transforms lives. Throughout the Kenya immersion we were able to see the profound impact of collective action and generosity and opportunities for further support. Join us in making a difference locally and globally.



Our Board and team



David Payton

Director / Chairman



Rob Fellows

Director



Ross Munns

Director



Greg Blaskett

Director, resigned in January
after 6 years of service



Tim Payton

Founder (retired)



Jason Pater

CEO and Director



Marg Perry

Partnerships and
Engagement Manager



Stephanie Hill

Philanthropy and
Engagement Manager



Elley Payton

Intern

Pathways to partner

Donor Advised Giving Funds

A Giving Fund is a sub-fund, within our ACNC registered Public Ancillary Fund which allows you to contribute to a dedicated fund, receive an immediate tax benefit, and support charities over time. You choose the fund's name and can share it within your networks. The corpus is invested responsibly, and donations are made from the income to support charitable causes. The fund can grow to increase impact, or it can be distributed more quickly to bring forward the effect of your giving. The Foundation's trustees ensure gifts are directed to charities with strong governance and outcomes. You can provide guidance on how your fund is allocated, including support for our charity partners, endorsed charities, or any ACNC-registered charity with DGR Item 1 status.

Corporate Philanthropy

Your business can be a powerful vehicle for social impact. You can:

- Donate a percentage of your profits or revenue – consider the 1% Pledge
- Give some of your shares to the Foundation to secure long term philanthropy
- Promote philanthropy to your staff and clients. They want to know what you are doing
- Get involved in volunteering
- Join us on charity visits, locally or overseas, to see the need first-hand.

We guide businesses every step of the way to embed philanthropy into your culture and operations.

Leave a gift in your will

You can continue your impact beyond your lifetime. Whether you want to support specific causes or leave a broad charitable legacy, we provide governance and stewardship to ensure your bequest is managed according to your wishes.

Inter-generational giving

Empower your family to make a difference across generations. We can help you hold family conversations about which charities to support and create opportunities for your family to engage directly with the causes you care about, including immersion experiences to see the impact firsthand. You can:

- Set aside an annual giving amount and collaborate on who to support
- Establish an endowment with support on how to distribute funds
- Create your own Foundation with support to manage it

Donate

Your donation goes directly to where it's needed most. We cover the cost of managing the Foundation and provide ongoing support to our charity partners, ensuring your gift creates maximum impact. You can donate directly to the Foundation, contribute via Bitcoin, or explore other options tailored to your giving style.

We are here to help you leverage your wealth, time, knowledge, and resources to drive meaningful transformation and live a life of purpose.



Profit and loss

Payton Foundation Group

For the year ended 30 June 2025

	Ruth Payton Foundation Ltd	Payton Foundation Fund	Seeding Hope Ltd	COMBINED FY 2025	COMBINED FY 2024
Income					
Payton Capital dividends	-	-	-	-	2,607,252
Capital Gains - Payton Capital sale					25,602,156
Investment income	1,858,160	7,116	2,061	1,867,337	53,477
Donations received	17,978	952,624	58,780	1,029,382	1,012,632
Total Income	1,876,138	959,740	60,841	2,896,719	29,275,517
Expenses					
Distributions to Charity partners	110,399	1,108,490	451,146	1,670,035	1,242,007
Distributions to PAF and Seeding Hope	1,201,580	(497,031)	(704,549)	-	-
Employment costs (net of Gov't subsidies)	-	-	435,038	435,038	356,170
Audit	3,000	3,000	2,000	8,000	6,000
Merchant fees	454	1,828	1,382	3,664	3,083
Subscriptions, office costs, legal fees	14,880		655	15,535	11,337
Fundraising costs	56,118		300	56,418	28,102
Insurance	6,110			6,110	9,105
Travel	104,504			104,504	60,213
Total Operating Expenses	1,497,045	616,287	185,972	2,299,304	1,716,017
Operating Surplus/(Deficit)	379,093	343,453	(125,131)	597,415	27,559,500
Asset revaluations/Frinking credits	(1,511,421)	14,047	-	(1,497,374)	(2,306,489)
Accounting profit	(1,132,328)	357,500	(125,131)	(899,959)	25,253,011

Balance Sheet

As at 30 June 2025

	Ruth Payton Foundation Ltd	Payton Foundation Fund	Seeding Hope Ltd	COMBINED FY 2025	COMBINED FY 2024
Assets					
Current assets					
Cash and cash equivalents	587,321	486,963	75,484	1,149,768	1,106,058
Accounts receivable and other debtors	44,678	93	2,075	46,846	661,212
Investments	24,088,976	52,289	-	24,141,265	768,408
Total Current assets	24,720,975	539,345	77,559	25,337,879	2,535,678
Non-current assets					
Property	868,966	-	1,366,521	2,235,487	868,966
Investments - Shares/Units	570,000	50,000		620,000	25,674,062
Other non-current assets	1,363,271	-		1,363,271	1,750
Total Non-current assets	2,802,237	50,000	1,366,521	4,218,758	26,544,778
Total assets	27,523,212	589,345	1,444,080	29,556,637	29,080,456
Liabilities					
Accounts payable	377	-	-	377	-
Employee entitlements/PAYG Payable	-	-	37,433	37,433	23,191
Loans	-	-	1,361,521	1,361,521	-
Total liabilities	377	-	1,398,954	1,399,331	23,191
Net Assets	27,522,835	589,345	45,126	28,157,306	29,057,265

Full versions of the audited financial statements will be available at payton.foundation/who-we-are/



Payton Foundation Ltd – ABN 18 154 771 801 | Payton Foundation Fund – ABN 59 273 252 003

foundation@payton.com.au | payton.com.au/foundation | 1300 330 283